

Model: LXDG-13-25

Single Jet Water Meter

Feature:

- Single jet, Dry-dial
- Material body: Brass
- Size: DN15 to DN25mm, (1/2" – 1")
- Available for hot water (90°C)
- Accuracy: Class B



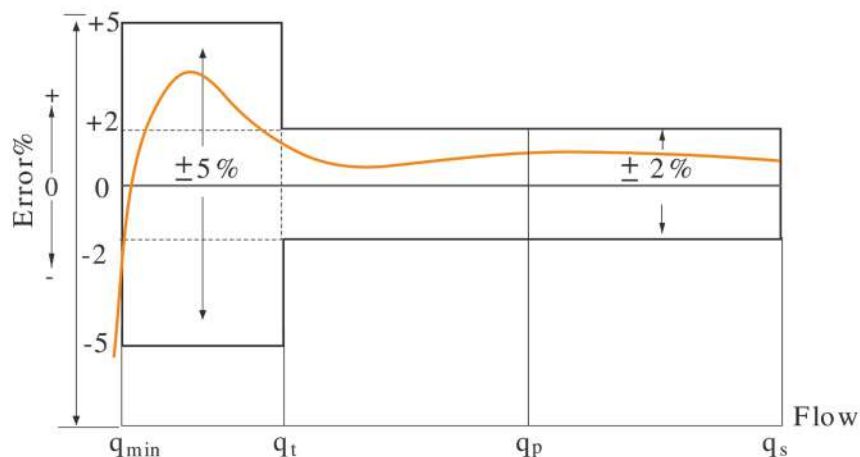
Main Technical Data:

According to ISO4064 (GB/T778.1-1996) Standard

Size		Class	Qs	Qp	Qt	Qmin	Min reading	Max reading
DN(mm)	Inch		Overload flow	Nominal flow	Transitional flow	Min flow		
		m³/h		L/h		m³		
15	1/2"	A	3	1.5	150	60	0.0001	99999
		B			120	30		
20	3/4"	A	5	2.5	250	100	0.0001	99999
		B			200	50		
25	1"	A	7	3.5	350	140	0.0001	99999
		B			280	70		

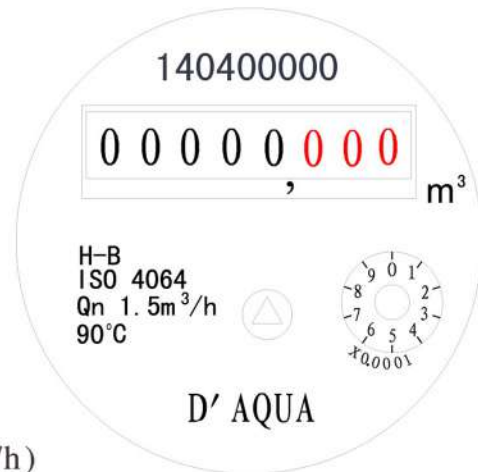
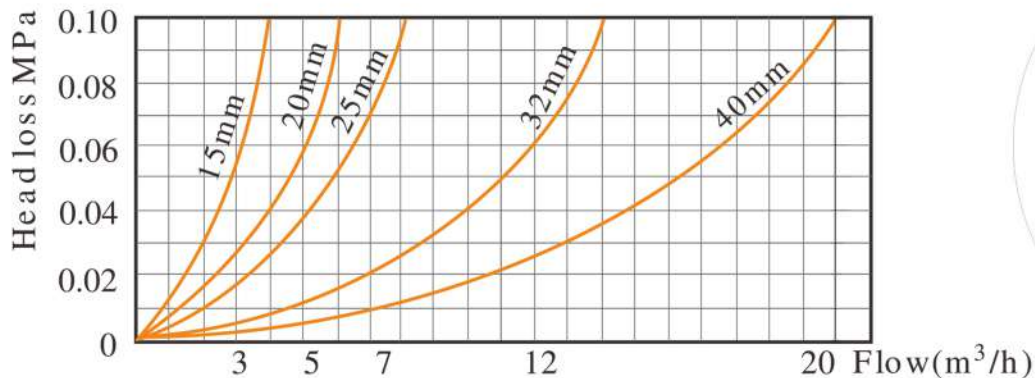
INDICATING ERROR

At low zone is $\pm 5\%$ from minimum flow rate (q_{min}) to transitional flow rate (q_t) exclusive boundary
 At high zone is $\pm 2\%$ from transitional flow rate (q_t) to overload flow rate (q_s)



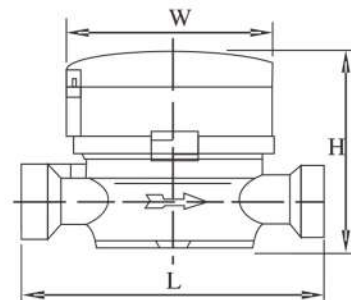
Model: LXDG-13-25

Head Loss Curve:



Dimensions and Weight:

Meter size Dia DN (mm)	L Length	W Width	H Height	Connecting Thread D	Weight Kg
	mm				
15	110	80	80	G 3/4B	0.58
20	130	80	80	G 1B	0.78
25	160	80	93	G1 1/4B	1.21



WORKING CONDITION:

Water temperature: ≤90°C for hot water meter

Working pressure: ≤1.6Mpa

Model: LXLC-50E-200E

Woltman Water Meter

Feature:

- Woltman type, Dry-dial
- Material body: Gray cast iron / Ductile cast iron
- Size: DN50 to DN200mm, (2" – 8")
- Available for cold water (50°C), hot water (90°C)
- Accuracy: Class B standard



Main Technical Data:

According to ISO4064 (GB/T778.1-1996) Standard

Size		Class	Qs	Qp	Qt	Qmin	Min reading	Max reading
DN(mm)	Inch		Overload flow	Nominal flow	Transitional flow	Min flow		
			m ³ /h				m ³	
50	2"	B	30	15	3	0.45	0.01	999999
65	2.5"	B	50	25	5	0.75	0.01	999999
80	3"	B	80	40	8	1.2	0.01	999999
100	4"	B	120	60	12	1.8	0.01	999999
125	5"	B	200	100	20	3	0.01	999999
150	6"	B	300	150	30	4.5	0.01	999999
200	8"	B	500	250	50	7.5	0.01	999999

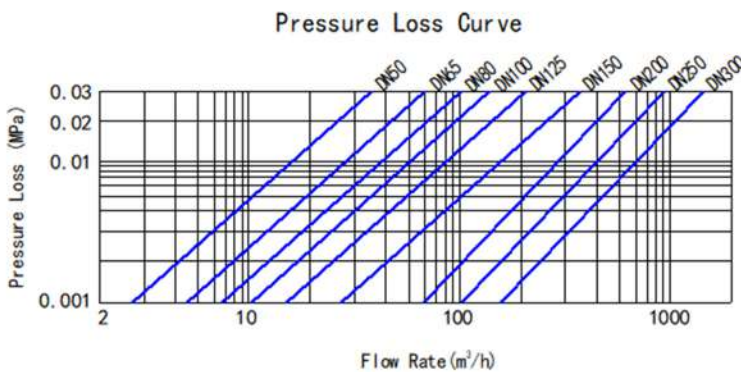
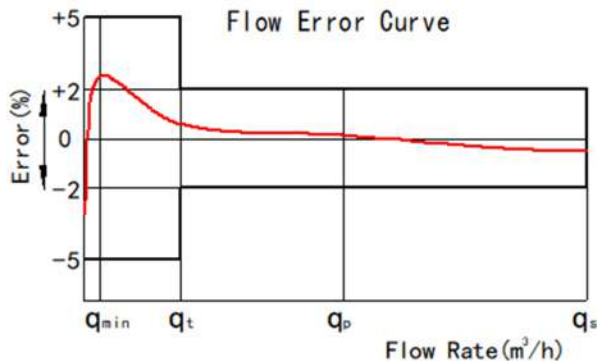
INDICATING ERROR

At low zone is $\pm 5\%$ from minimum flow rate (qmin) to transitional flow rate (qt) exclusive boundary
 At high zone is $\pm 2\%$ from transitional flow rate (qt) to overload flow rate (qs)

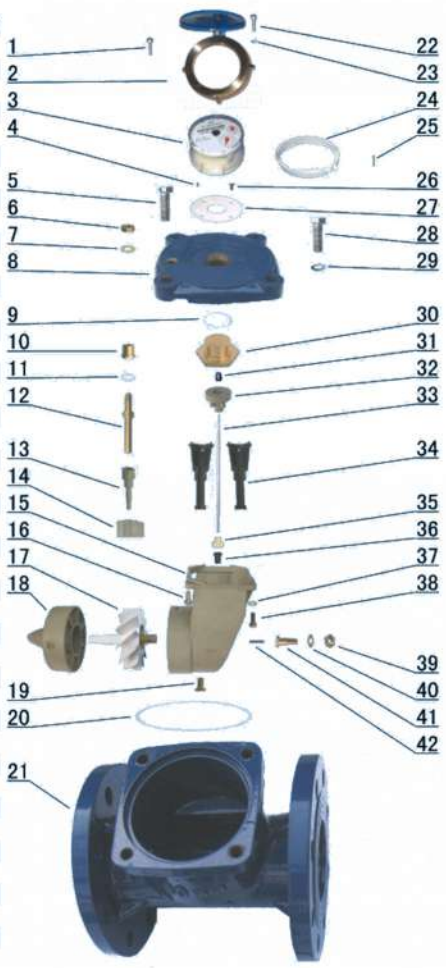
WORKING CONDITION:

Water temperature: $\leq 50^\circ\text{C}$ for cold water meter
 Water temperature: $\leq 90^\circ\text{C}$ for hot water meter
 Working pressure: $\leq 1.6\text{Mpa}$

Model: LXLC-50E-200E

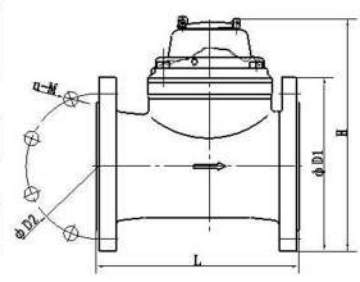


Code	Description	Material	QTY
1	Screw For Sealing	Stainless Steel	2
2	Cover With Lid	Assembly	1
3	Sealed Register	Assembly	1
4	Position Pin	Stainless Steel	1
5	Lead Seal Bolt	Stainless Steel	2
6	Adjusting Nut	Brass	1
7	Gasket	Brass	1
8	Flange Cover	GGG40 ductile Iron	1
9	O-ring	Silicon Rubber	1
10	Bush	Brass	1
11	Gasket	Synthetic Rubber	1
12	Adjusting Lever	Brass	1
13	Connecting Lever	MPPO	1
14	Adjusting Plate	MPPO	1
15	Support	MPPO	1
16	Bolt	Brass	1
17	Turbine Component	Assembly	1
18	Rectifier	MPPO	1
19	Screw	Brass	1
20	O-ring	Synthetic Rubber	1
21	Body	GGG40 ductile Iron	1
22	Screw M4×20	Stainless Steel	2
23	Gasket	Stainless Steel	3
24	Retainer	ABS	1
25	Fixing pin	Brass	1
26	Screw	Brass	4
27	Support	ABS	1
28	Bolt M12×35	Stainless Steel	2
29	Gasket	Stainless Steel	4
30	Upper Bearing Plate	Brass	1
31	Upper Bearing	Nylon With Graphite	1
32	Magnet Component	Component	1
33	Transmission Shaft	Stainless Steel	1
34	Sheath	MPPO	2
35	Bevel Gear	Nylon	1
36	Lower Bearing	Nylon With Graphite	1
37	Gasket	Brass	4
38	Screw	Brass	3
39	Nut	Brass	1
40	Gasket	Brass	1
41	Turbine Shaft Hold	Brass	1
42	Turbine Shaft	Tungsten Steel	1



Dimensions and Weight:

Meter size Dia DN	L Length	B Width	H Height	Connecting Thread			Weight
				D	Bolt Circle Dia D1	Conncting Bolt	
(mm)	mm			D	Bolt Circle Dia D1	Conncting Bolt	KG
50	200	175	250	165	125	4×M16	12
65	200	185	255	185	145	4×M16	13
80	225	200	265	200	160	8×M16	15
100	250	220	275	220	180	8×M16	19
125	250	245	285	245	210	8×M16	22
150	300	285	375	285	240	8×M20	47
200	350	345	400	340	295	8×M20	48



NOTE: The flange dimension conforms to ISO7005-2:1988 standard.
Order for products of special requirements is also accepted.

Model: LXSG-15E1-50E1

Multi Jet Water Meter

Feature:

- Multi jet, Dry-dial
- Material body: Brass
- Size: DN15 to DN50mm, (1/2" – 2")
- Available for cold water (50°C), hot water (90°C)
- Accuracy: Class B



Main Technical Data:

According to ISO4064 (GB/T778.1-1996) Standard

Size		Class	Qs	Qp	Qt	Qmin	Min reading	Max reading
DN(mm)	Inch		Overload flow	Nominal flow	Transitional flow	Min flow		
		m ³ /h		L/h		m ³		
15	1/2"	A	3	1.5	150	60	0.0001	99999
		B			120	30		
20	3/4"	A	5	2.5	250	100	0.0001	99999
		B			200	50		
25	1"	A	7	3.5	350	140	0.0001	99999
		B			280	70		
32	1 1/4"	A	12	6	600	240	0.0001	99999
		B			480	120		
40	1 1/2"	A	20	10	1000	400	0.001	99999
		B			800	200		
50	2"	A	30	15	1500	600	0.001	99999
		B			1200	300		

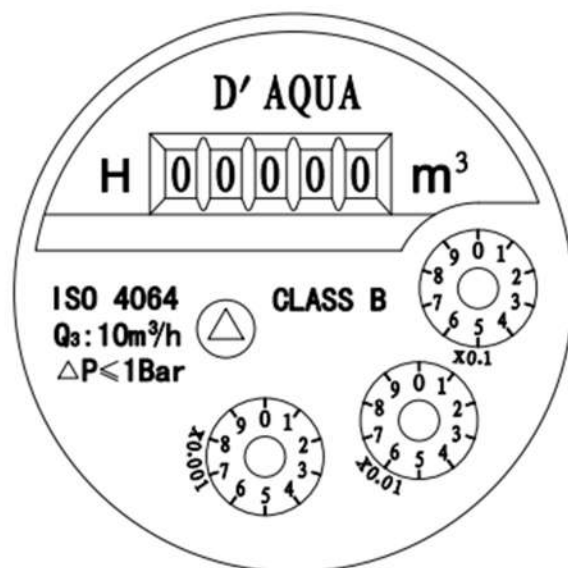
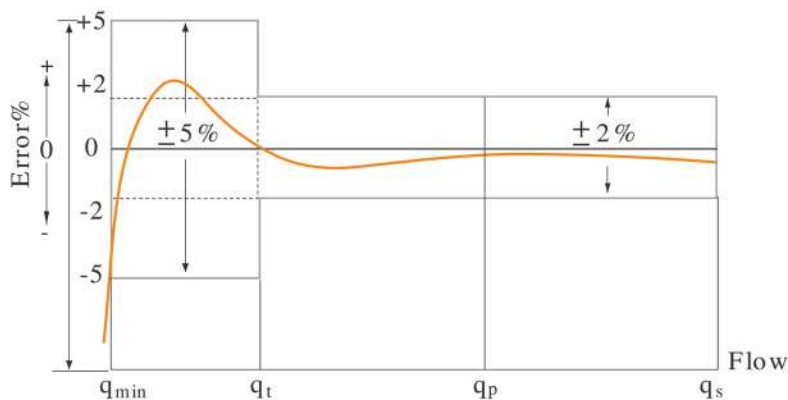
INDICATING ERROR

At low zone is ±5% from minimum flow rate (qmin) to transitional flow rate (qt) exclusive boundary

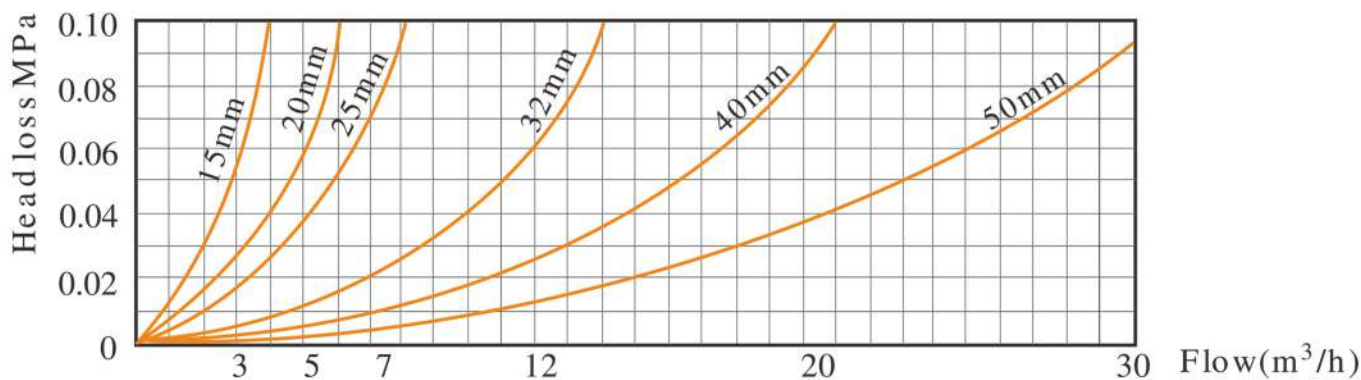
At high zone is ±2% from transitional flow rate (qt) to overload flow rate (qs)

Model: LXSG-15E1-50E1

Error Curve:

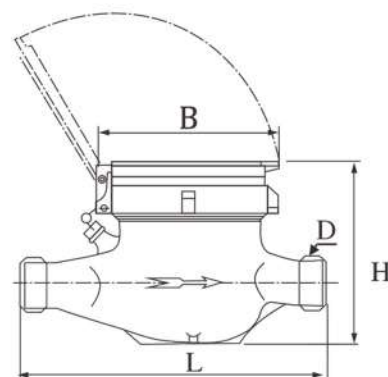


Head Loss Curve:



Dimensions and Weight:

Meter size Dia DN (mm)	L Length	B Width	H Height	Connecting Thread D	Weight Kg
15	165	99	108	G 3/4B	1.4
20	190	99	108	G 1B	1.7
25	225	104	114	G1 1/4B	2.4
32	230	104	117	G1 1/2B	2.7
40	245	128	158	G 2'B	4.5
50	280	128	183	G2 1/2 B	7.2



WORKING CONDITION:

Water temperature: ≤50°C for cold water meter

Water temperature: ≤90°C for hot water meter

Working pressure: ≤1.6Mpa